

TACOMA SKYLINE 8/12/2013 (REV. 8/14/13)

12'-0" MIN - 10'-0" MAX  
12'-0" MIN - 10'-0" MAX  
STREET LIGHTS AND BUILDING STRUCTURES ELEVATION (17')  
STREET LIGHTS AND BUILDING STRUCTURES ELEVATION (17')  
STREET LIGHTS AND BUILDING STRUCTURES ELEVATION (17')  
STREET LIGHTS AND BUILDING STRUCTURES ELEVATION (17')

# Chancellor/Campus Town Hall October 12<sup>th</sup>, 2015

ACTIVATE VISUAL CORRELATION  
SCALE DOWN UP (STAIRS)  
DOWNTOWN REVISION

TOWERHALL PLAZA  
VIEW STIMULUS

W

# Points to Cover

- Overview Since Last Town Hall
- Organizational/Leadership Development
  - ✦ Searches ✦ Cabinet ✦ CBC ✦ Global ✦ Race & Equity ✦ Schools
- Educational Outreach/Engagement
  - ✦ Leadership ✦ Council ✦ Timeline
- 2015-16 Budget
- Enrollment Development/First Two Years
- Strategic Visioning/Planning
- Questions and Discussion



## Short Term (1-3 months)

- Schedule day long visits with each UWT Academic Unit, and Functional units (Business/Admin., Student, and Academic)
- Visit other UW & Regional Community and Technical Colleges
- Forge Key Partnerships (Deans and Directors, President, Provost, UWB Chancellor, Faculty Executive Council Chair, ASUWT, UWTSAs, Alumni & Donors, Government, K-12, and Community Leaders)
- Visit Lewis McCord and meet with Base Leaders
- Learn 2015-16 budget & begin to prepare for 2016-17
- Assess resources, expertise, capacities, gaps, etc.
- Learn: culture/concerns/aspirations/expectations
- Most important - **listen . . then plan . . then act!**

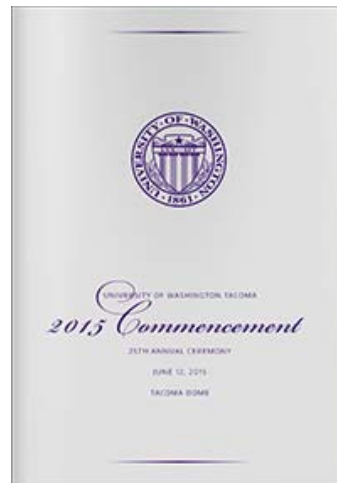
## Longer Term (4-9 months)

- Study how we best meet the needs of the current UWT constituency base and those of possible future learners
- Gauge and provide for a professional development plan for our faculty and staff with enhanced compensation
- Enhance current undergraduate and graduate programs
- Clarify opportunities and strengths and then provide for appropriate learning, discovery, and engagement portfolio
- Systematically build our vision on our existing foundation
- Determine future resource needs and possible sources
- Develop/implement action plan with associated funding
- Engage constituents (**create enthusiasm and momentum**)



# Commencement 2015 – 6/12/15

Charles “Kelly” Creso ‘91



1651 Graduates

17,530 Alumni



# The 25<sup>th</sup> Anniversary Soiree on the PLT - 7/25/15



**UW Tacoma Advisory  
Board Chair - David Zeck**

**Chef Gordon Naccarato**





# Paint the Park Purple Event 8-7-2015



Box Score  
Rainiers 7  
Reno Aces 6



# Similar Form – but who would you rather face?



**W**



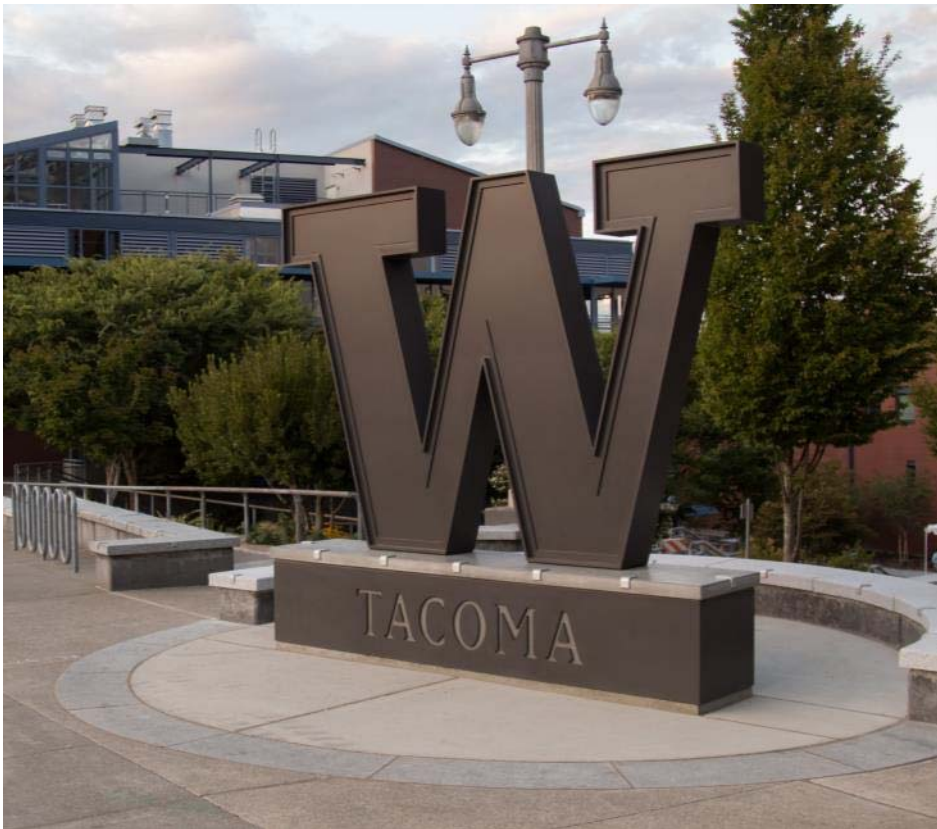
# 25,000 Mile Celebration 8/25/15



Derek Young



# The UW Tacoma "W" – Unveiling 9/25/15



Father of the Tacoma "W"  
Cody Char '13





# 2015 Convocation



**Puyallup Tribal  
Council Chairman  
Bill Sterud**

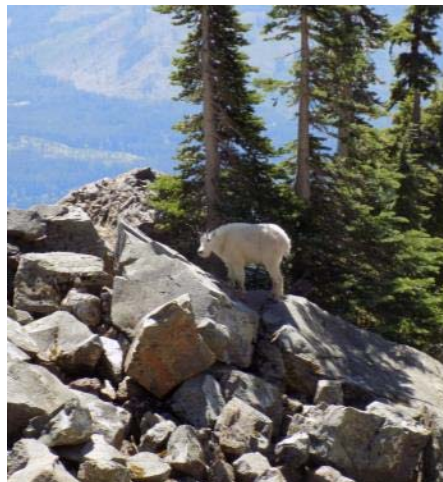
**Deputy Mayor  
David Boe**

**ASUWT President  
Sophie Nop**





# Exploring Washington – Summer 2015





# Exploring Washington – Summer 2015





# Organizational/Leadership Development







# EVCAA Screening Search Committee

---

- Nita McKinley, Chair
- Megan Bentley-Moon
- Linda Hurley Ishem
- Leslie Kinkade
- Jocelyn Patterson
- Patrick Pow
- Alina Solano, Administrative Support
- Diversified Search - Consultant





# EVCAA Search

---

## Candidate #1

Monday and Tuesday  
October 12 & 13, 2015

## Candidate #2

Wednesday and Thursday  
October 14 & 15, 2015

**Stay Tuned:** Candidate #3 – October 19 & 20  
Candidate #4 – October 21 & 22  
Candidate #5 – October 26 & 27



# Dean/Director Searches 2015-16

---

IAS and Milgard - Storbeck/Pimentel as Consultant

- IAS - kicked off October 6<sup>th</sup>, 2015  
Ali Modarres - Chair, Jenny Quinn - Co-Chair
- Milgard to be kicked off shortly  
Cheryl Greengrove - Chair, Ehsan Feroz - Co-Chair

Education and Institute of Technology – RFP Out

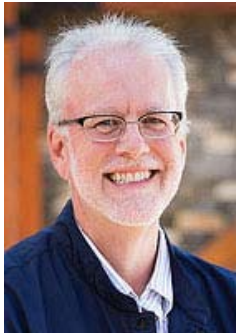
Education Chaired by Diane Young

- Both will kick off shortly behind the other two





# Chancellor's Cabinet



**Bill Kunz**  
Interim Vice  
Chancellor  
for Academic  
Affairs



**Cedric Howard**  
Vice Chancellor  
for Student &  
Enrollment  
Services



**Joshua Knudson**  
Vice Chancellor  
for Advancement



**Harlan Patterson**  
Vice Chancellor  
for Finance &  
Administration



**Patrick Pow**  
Vice Chancellor  
for Information  
Technology



**Sharon Parker**  
Assistant Chancellor  
for Equity & Diversity



**Lisa Hoffman**  
Assistant to the  
Chancellor for  
Strategic Projects



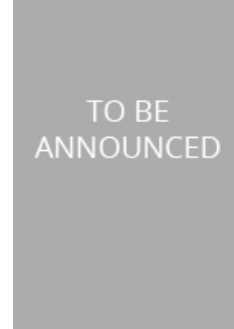
**Marcie Lazzari**  
Chair, Faculty  
Assembly



**Mark Pendas**  
Vice Chair, Faculty  
Assembly



**Robert Hardie**  
Staff representative



Student  
representative



# International Programs/ International Student Services/ Institute for Global Engagement

---

## Consultants

Monica Porter, Ph.D.

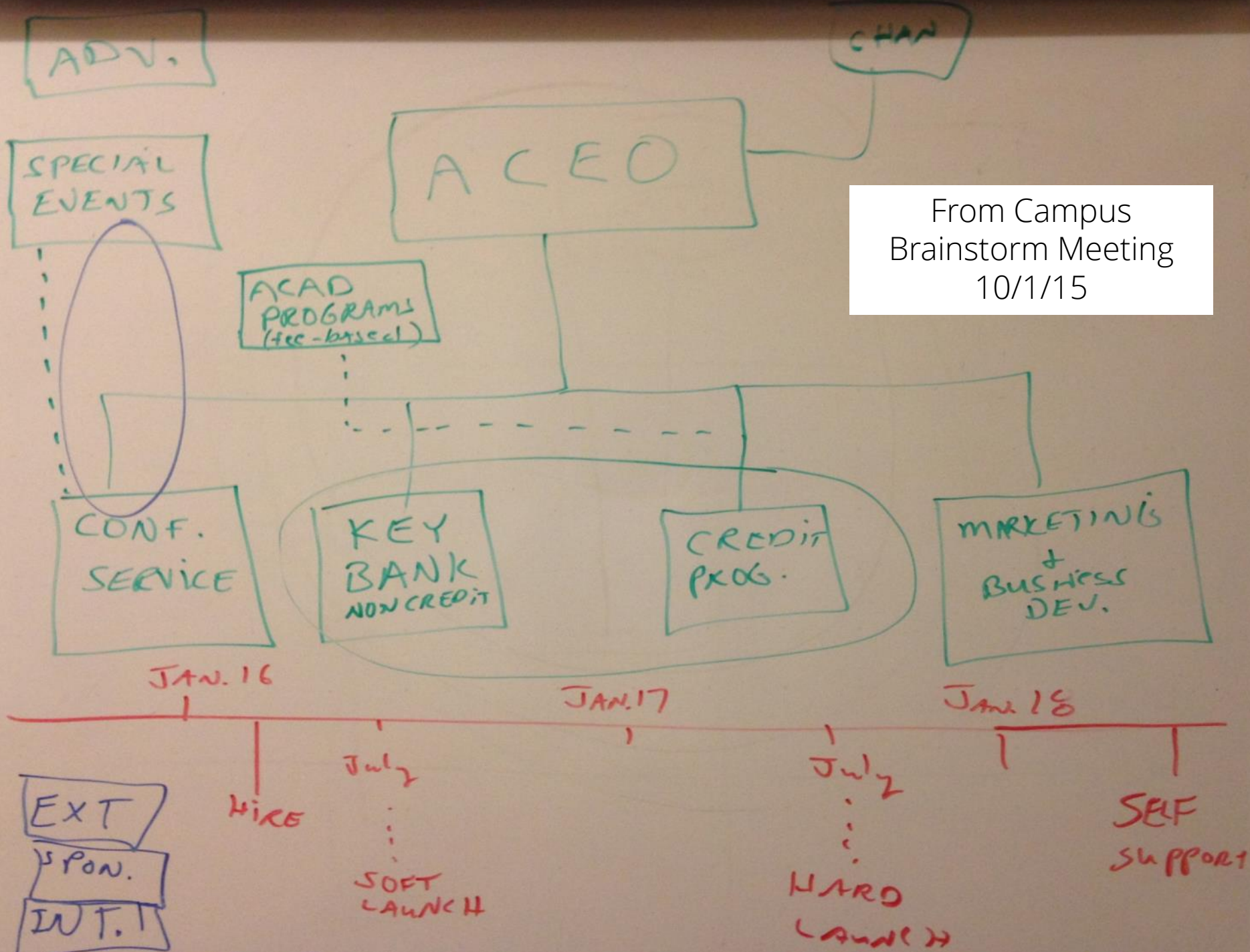
Assistant Vice Chancellor, Enrollment  
Management and Student Life and  
Director, Office of International Affairs  
University of Michigan - Dearborn  
Dearborn, MI

Gil Latz, Ph.D.

Associate Vice Chancellor for  
International Affairs - IUPUI and  
Associate VP for International  
Affairs - Indiana University, and  
Professor of Geography and  
Philanthropic Studies,  
Indianapolis, IN

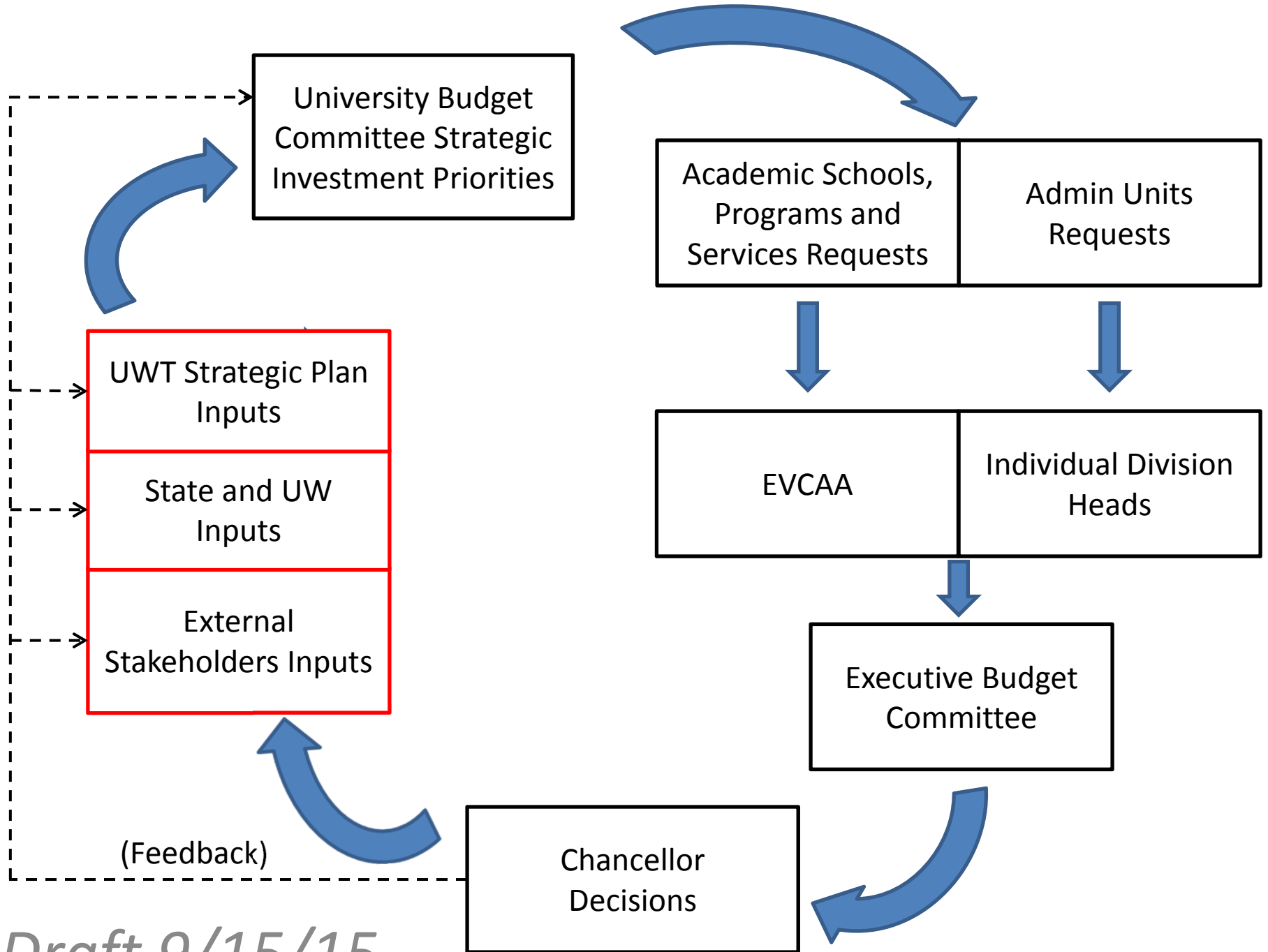
**Visit Dates: November 8-10, 2015**





From Campus  
Brainstorm Meeting  
10/1/15





*Draft 9/15/15*

Executive Budget Committee	
Chancellor	Executive Vice Chancellor for Academic Affairs
Associate Vice Chancellor for Finance	Vice Chancellor for Finance and Administration
Vice Chancellor for Advancement	Vice Chancellor for Student and Enrollment Svcs
Vice Chancellor for Information Technology	Faculty Executive Council

Campus Budget Committee	
Chancellor	Deans & Directors (7)
Faculty Assembly (2)	Staff Association (2)
ASUWT (2)	Community Engagement (1)
Executive Vice Chancellor for Academic Affairs (1)	Vice Chancellor for Finance and Administration (1)
Vice Chancellor for Student & Enrollment Svcs (1)	Alumni (1)
Enrollment Services (1)	Vice Chancellor for Advancement (1)
Vice Chancellor for Information Technology (1)	Equity and Diversity Office (1)
Research (1)	

*Draft 9/15/15*

# Budget Development for 2015-16

- Tacoma Paper and Stationery Building (Urban Solutions Center) \$16M
- Soil Remediation Funds \$1M
- Resident Student Tuition Reduction
- 3% Faculty/Staff Increases (average amount)
- Tuition Backfill (State and Provost's Office)
- 2<sup>nd</sup> Year of Biennium (state authorizes 1.8% pay increase and further tuition reduction - UW may aim for 4% pay increase)





# 2015-16 New Faculty FTE Projections

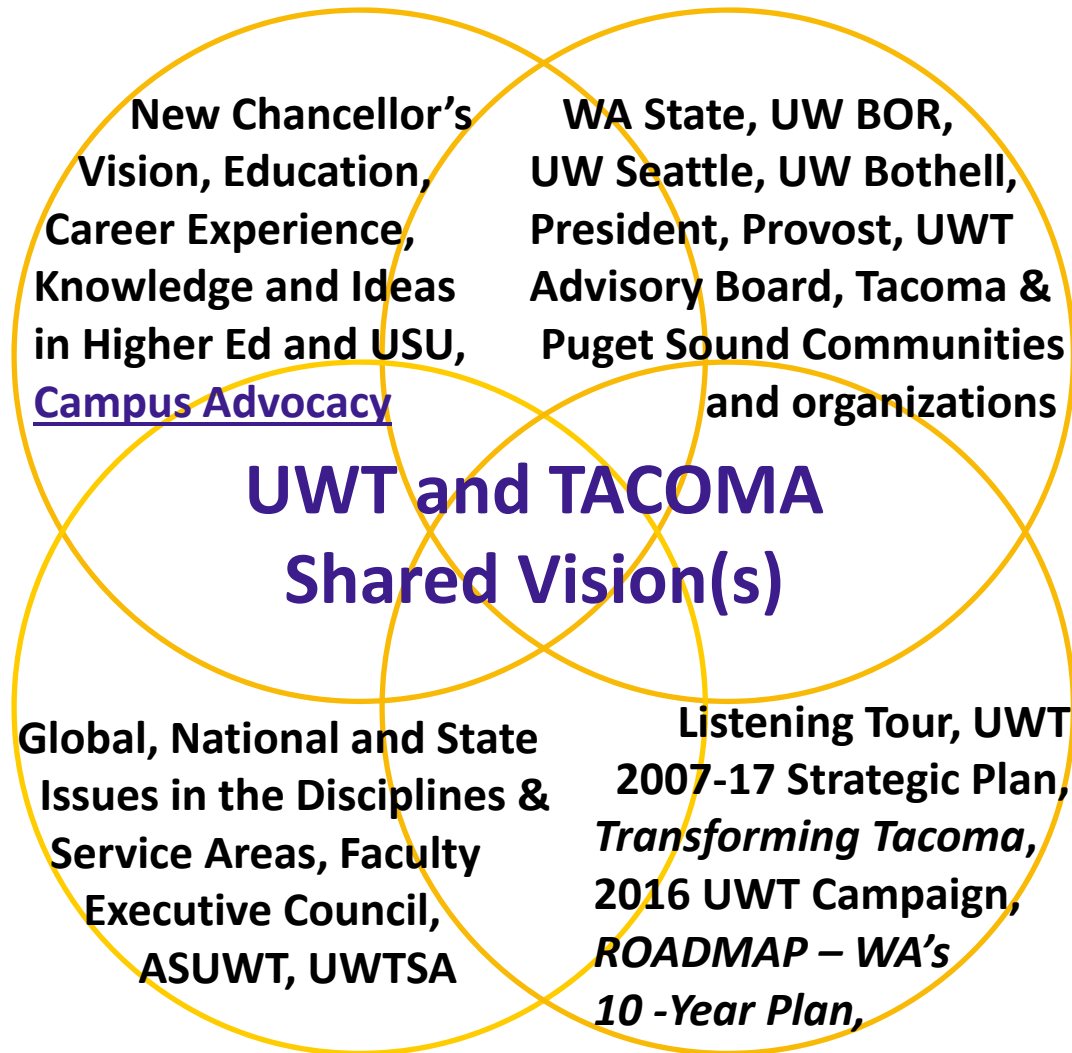
• Vice Chancellor for Academic Affairs	1
• Academic Deans & Directors	4
• New Tenured or Tenure Track Positions	3
• Carry-Forward Tenured or Tenure Track Positions	5
• Replacement Tenured or Tenure Track Positions	4
• Competitive Lecturer Positions	<u>13</u>
Total	30



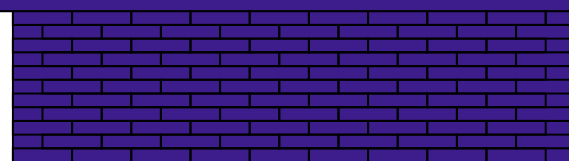
UW Tacoma  
 Staff Hiring Approvals for FY 2106  
 As of 8/31/15

		<u>Staff FTE</u>	<u>Salary &amp; Benefits</u>	
<b>New Permanent Central Funding</b>				
Academic Affairs	TLC-Instructional Cons. Science	1.00	\$ 66,242	Current Temp
Academic Affairs	TLC-Instructional Cons. Writing	1.00	\$ 66,242	Current Temp
Advancement	Graphic Designer	1.00	\$ 63,311	Current Temp @ 75%
Chancellor	Asst. Chancellor for Educational Outreach	1.00	\$ 156,600	
SAES	Doctoral Psychology Interns-2		\$ 32,027	
SAES	Psychologist	0.50	\$ 33,386	
SAES	Asst Dir. Of Career Development	1.00	\$ 76,740	
		<u>5.50</u>	<u>\$ 494,548</u>	
<b>Funded with Existing Unit Funds</b>				
Advancement (Perm)	Content Specialist	1.00	\$ 58,322	
Education (Temporary)	Data Steward & Curricular Assessment Specialist	0.50	\$ 40,289	
Chancellor	Program Asst. for Community Engagement (TEMP)	0.38	\$ 20,070	Oct-July
		<u>1.88</u>	<u>\$ 118,681</u>	

## Remember Mark's Strategic Planning Vision from Interview?



Tacoma Historic Warehouse District



**Historical Strengths and Foundational Tenets of UWT**





# UW Tacoma 2015-16 Strategic Plan Initiative

Consultant: Kathleen Deakins  
JayRay President & Co-owner



Bonnie J. Becker, Ph.D.

Co-Chair, Strategic Planning Committee  
Associate Professor of Marine Ecology  
Associate Dean of Curriculum and Academic Initiatives  
Interdisciplinary Arts and Sciences

Richard Wilkinson

Co-Chair, Strategic Planning Committee  
Associate Vice Chancellor  
Organizational Effectiveness & Development

Web Site: <http://www.tacoma.uw.edu/strategic-planning>



# Strategic Planning Committee

- **Brian Anderson**, Director of Marketing & Creative Services (Design and Production)
- **Kathy Beaudoin**, Associate Professor, Education (Education Representative)
- **Amanda Bruner**, Director of Student Transitions Programs, Student & Enrollment Services (Staff Association Representative)
- **Sheri Burden**, Office Assistant, Nursing & Healthcare Leadership (Staff Association Representative)
- **Colleen Carmean**, Assistant Chancellor for Academic Technologies & Institutional Research (Academic Affairs Representative)
- **Pat Clark**, Director of Campus Planning & Real Estate, Finance & Administration (Facilities Planning Representative)
- **Rich Furman**, Professor, Social Work (Social Work Representative)
- **Joshua Garcia**, Deputy Superintendent, Tacoma Public Schools (Community Representative)
- **Cheryl Greengrove**, Interim Dean, School of Interdisciplinary Arts & Sciences (SIAS Representative)
- **Andrea Hill**, Lecturer, Social Work (Lecturer Representative)
- **Lisa Hoffman**, Special Assistant for Community Engagement, Office of the Chancellor (Community Engagement Representative)
- **Cedric Howard**, Vice Chancellor, Student & Enrollment Services (Vice Chancellor)
- **Holly Bamford Hunt**, Director, Bamford Foundation (Community Representative)
- **Leslie Kinkade**, Associate Vice Chancellor, Advancement (Corporate Relations Representative)
- **Josh Knudson**, Vice Chancellor, Advancement (Vice Chancellor)
- **Bill Kunz**, Interim Vice Chancellor, Academic Affairs (Vice Chancellor)
- **Joel Larson**, Assistant Director of Operations, Institute of Technology (Institute of Technology Representative)
- **Nita McKinley**, Past Chair, Faculty Assembly (Faculty Assembly Representative)
- **Ali Modarres**, Director, Urban Studies (Urban Studies Representative)
- **Mark Pagano**, Chancellor (Convener)
- **Sharon Parker**, Assistant Chancellor, Equity & Diversity (Diversity and Inclusion Representative)
- **Harlan Patterson**, Vice Chancellor, Finance & Administration (Vice Chancellor)
- **Jocelyn Patterson**, Student (Student Representative)
- **Patrick Pow**, Vice Chancellor, Information Technology (Vice Chancellor)
- **Lauren Pressley**, Director, UW Tacoma Library (Library Representative)
- **David Reyes**, Assistant Professor, Nursing & Healthcare Leadership (Nursing & Healthcare Leadership Representative)
- **Karl Smith**, Associate Vice Chancellor and Chief Admissions Officer, S&ES (Enrollment Services Representative)
- **Alina Solano**, Executive Assistant to the Chancellor, Office of the Chancellor (Administrative Support)
- **Tracy Thompson**, Associate Professor, Milgard School of Business (Milgard School of Business Representative)



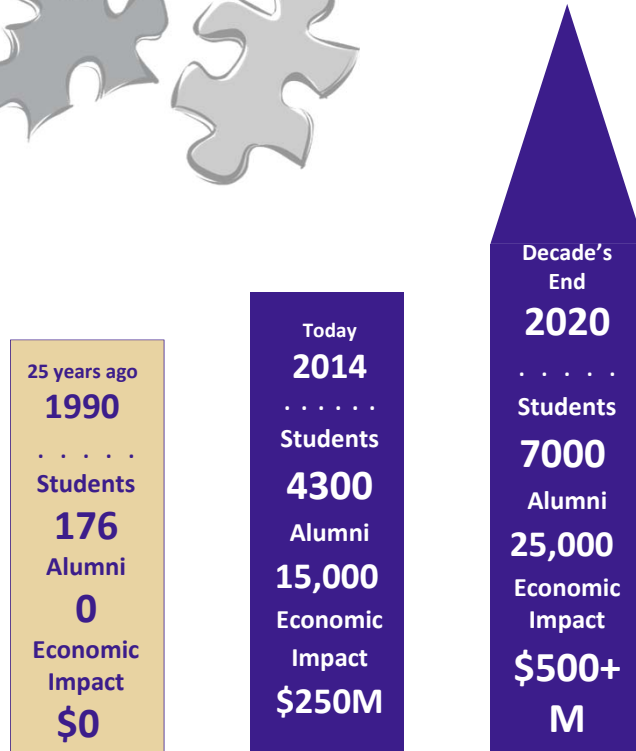
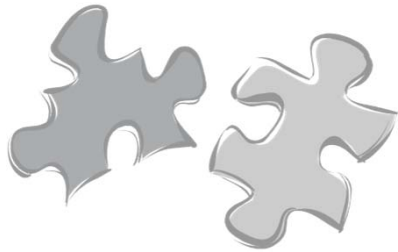
# Strategic Plan Initiative 2015-16

- Process is being **Co-created** as we engage with each set of constituents
- Transparency is built into all phases of the process
- The meetings and process are specifically designed to be collaborative, engaging, and inclusive
- First phase is answering the **“Big Question”** on Vision
- Second phase is to design initiatives to guide UW Tacoma during the next five years toward the established Vision
- The idea is that it is not the 30 person committee’s plan, it is your plan, so we need everyone on deck and involved!
- The plan will be utilized!





# Two critical pieces of this puzzle



1. Strategic Enrollment Management

2. Clear resource plan moving forward including all possible categories



# Fall 2015 Enrollment Projections

Autumn 2014	4,501
Autumn 2015 (projection)	4,631
Original Plan prior to Autumn 2014	7% growth
Revised Plan current to today	4% growth
2015-16 budget growth plan	4% growth
Actual enrollment (approximate)	3% growth
Plan going forward (2016-17)	?? growth



# Critical Strategic Initiatives that Can't Wait on the Strategic Plan and Need to be Developed in Parallel

- Campus needs an active cross-functional strategic enrollment development plan sooner rather than later
- In conjunction with enrollment development, campus needs to carefully weigh budget development and priorities for coming year
- Campus needs a solid plan for the first-two-years curriculum across all programs focused on both student learning and success
- Campus needs a comprehensive plan for all academic programs to move toward becoming schools
- UW Tacoma needs to integrate inclusion and equity into all phases of campus life for faculty, staff, and students, thus the reinvigoration of a campus *Race and Equity Steering Committee*



# Questions and/or Discussion

---